


透科自动化









						
<b>DHCP</b> 服务	扫描 模块	下载 参数	监控	参数	描述文 件导入	帮助


✕

IP地址范围:  —

0%



LA\_Config
- □ ✕

0 - IP0808X\_EF (IP-台式 801 800 Ethernet/ip)

General

IP地址分配方式+ 静态IP

滤波时间+ 5

DO\_错误模式+ 0

DO\_错误安全值+ 0

2024-09-23 10:53:07

DHCP

	MAC	IP	状态
1	7C : BA : CC : 15 : 82 : 3E	192 . 168 . 0 . 1	未分配

添加MAC  
删除MAC

启动服务  
关闭服务

加载配置  
保存配置

DHCP 启动单启模块申请被分配新的IP地址

信息栏



DHCP

	MAC	IP	状态
1	7C : BA : CC : 15 : 82 : 3E	192 . 168 . 0 . 3	分配成功

添加MAC  
删除MAC

启动服务  
关闭服务

加载配置  
保存配置

DHCP 启动单启模块申请被分配新的IP地址

信息栏

```

[23-Mar-23 10:50:19] Warning: Interface 192.168.10.19 is not Static. ignored
[23-Mar-23 10:50:19] Lease URL: http://127.0.0.1:6789
[23-Mar-23 10:50:19] Listening On: 192.168.0.211
[23-Mar-23 10:50:20] DHCPREQUEST for 7c:ba:cc:15:82:3e () from interface
  
```



Settings window showing a table with columns: mac, IP地址, 子网掩码, 默认网关, 模块名称, 状态.

mac	IP地址	子网掩码	默认网关	模块名称	状态
-----	------	------	------	------	----

扫描时间: 5 :S

Buttons: 全局扫描, 修改IP, 恢复出厂设置, 重启模块

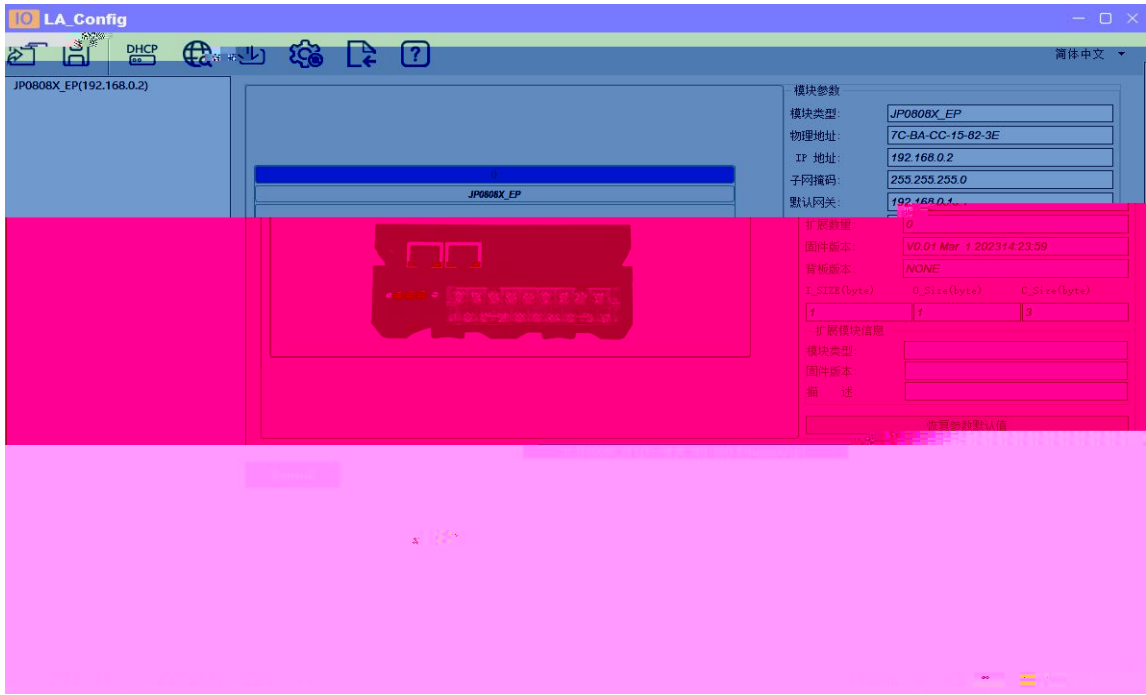
Settings window showing a table with columns: mac, IP地址, 子网掩码, 默认网关, 模块名称, 状态.

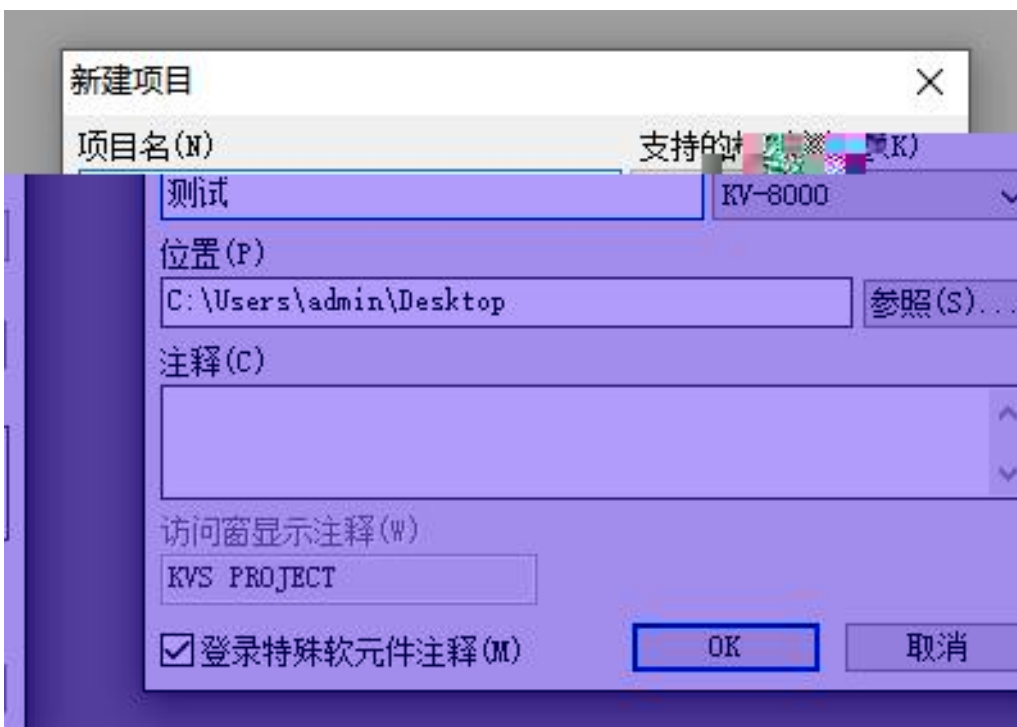
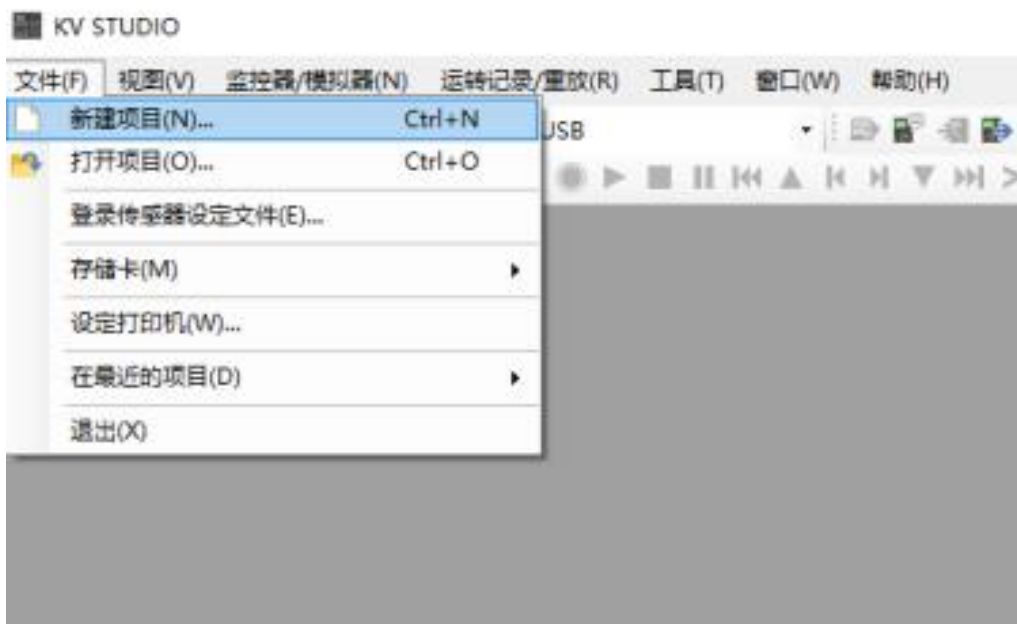
mac	IP地址	子网掩码	默认网关	模块名称	状态
1 7C-BA-CC-15-82-3E	192 . 168 . 0 . 3	255 . 255 . 255 . 0	192 . 168 . 0 . 1	JP0808X_EP	未操作

扫描时间: 5 :S

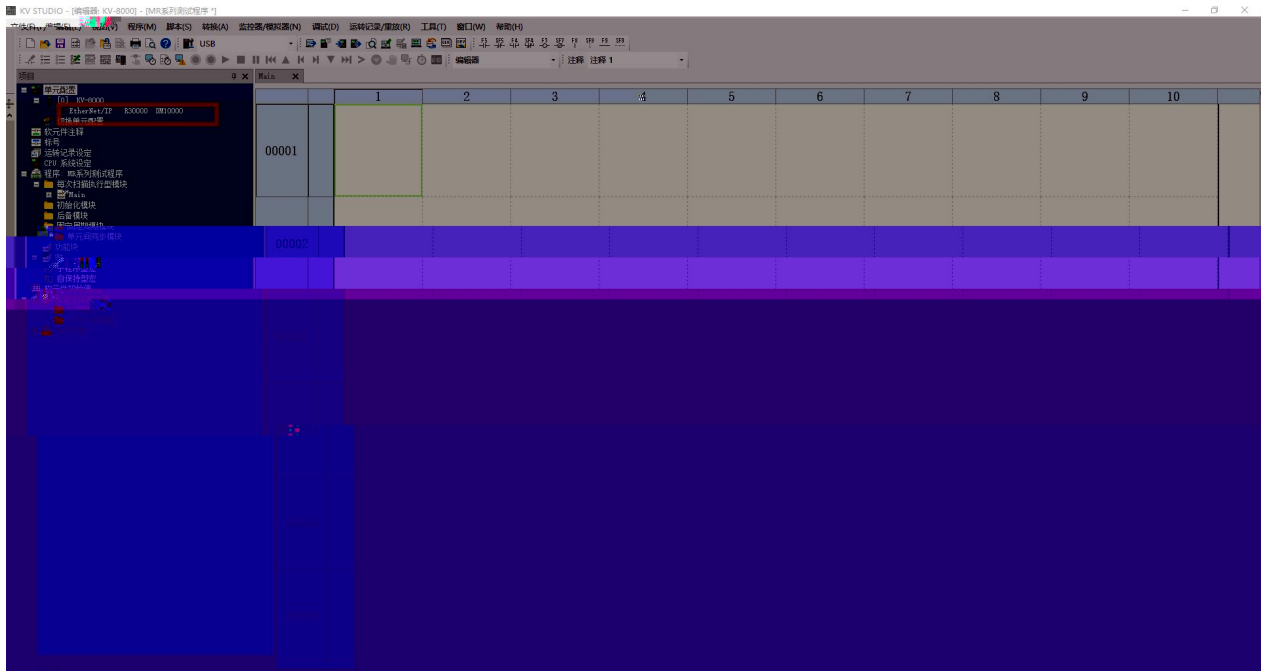
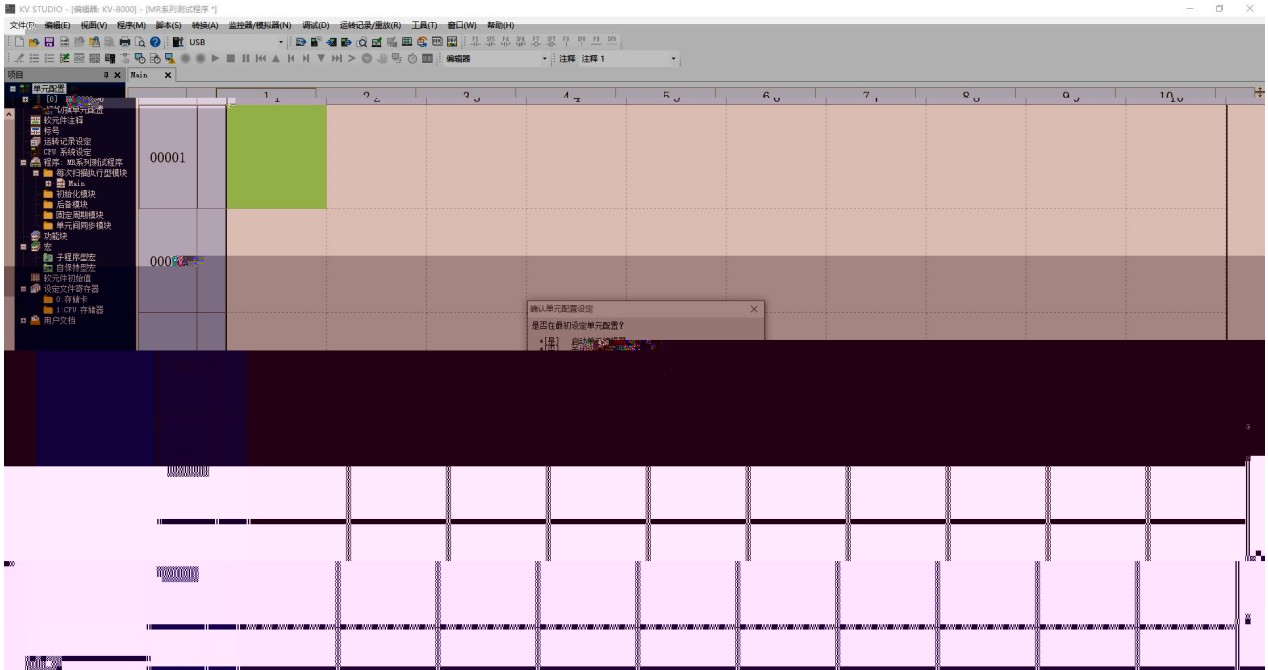
Buttons: 全局扫描, 修改IP, 恢复出厂设置, 重启模块

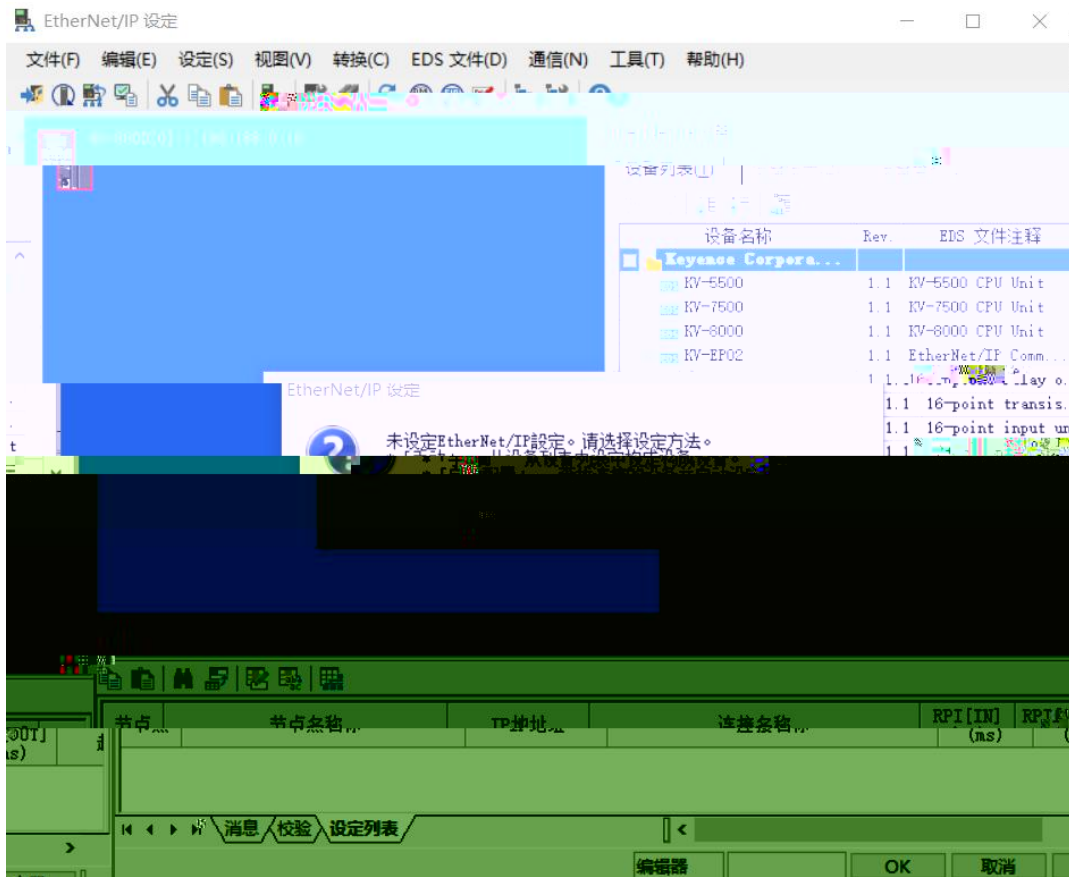
扫描进行中:  100%



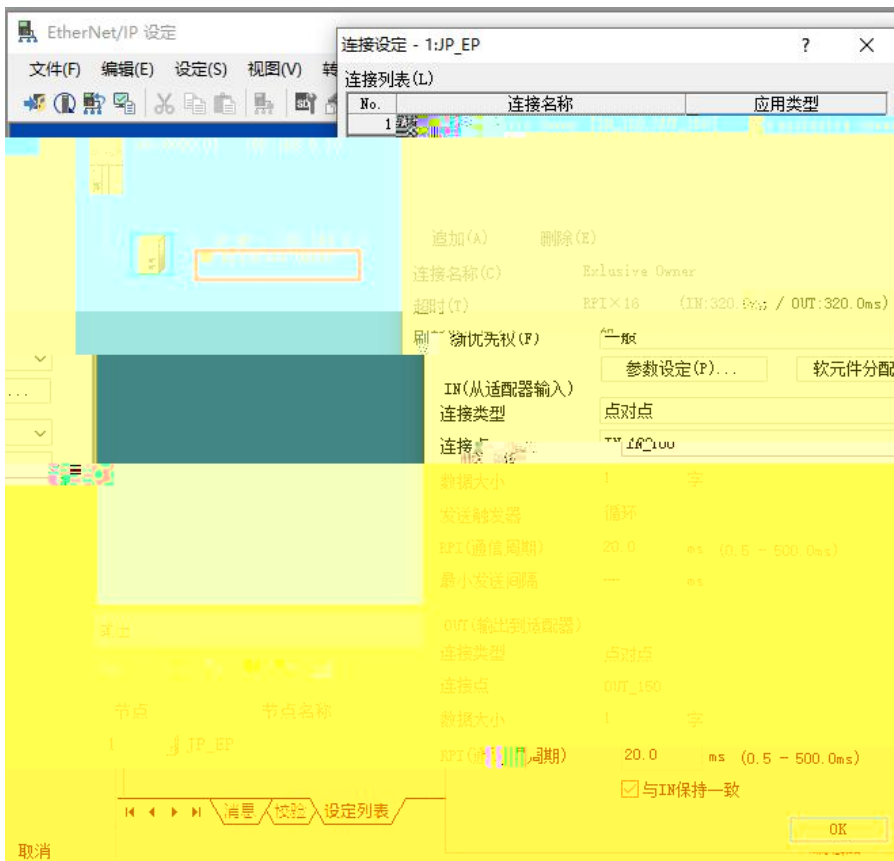
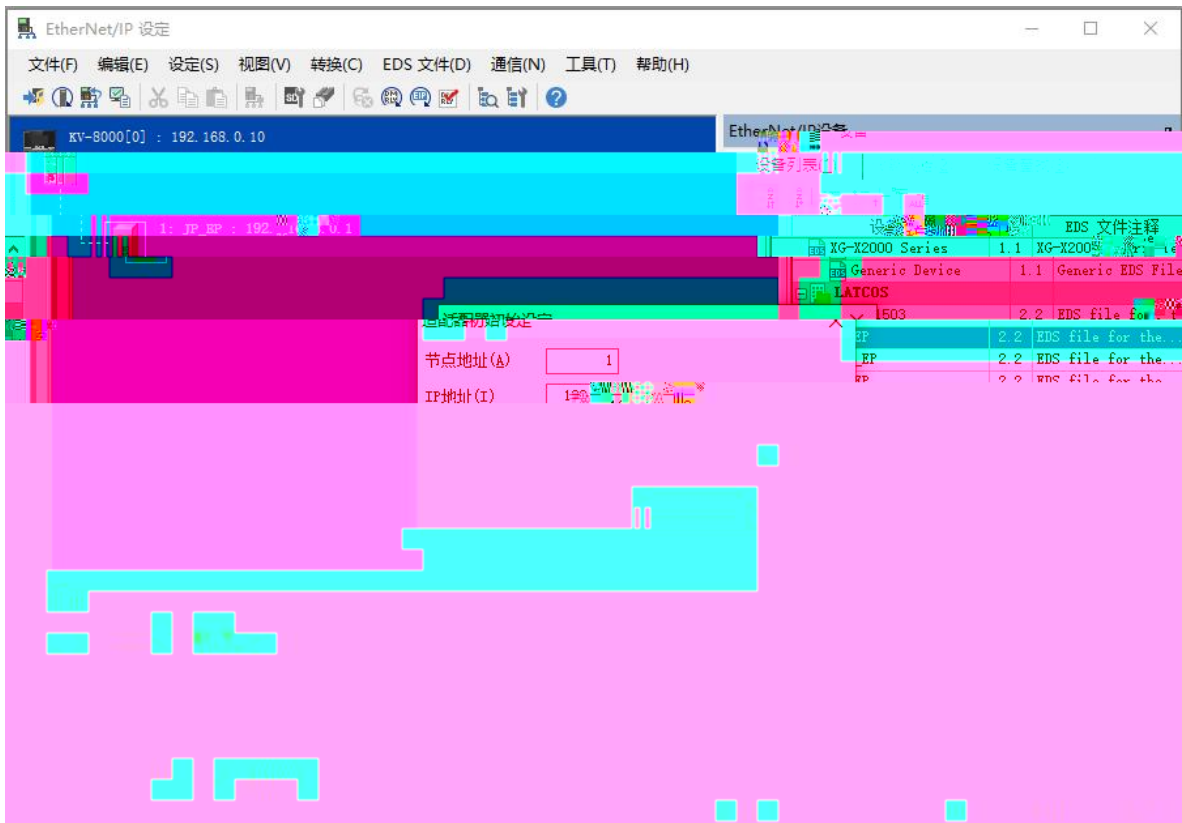




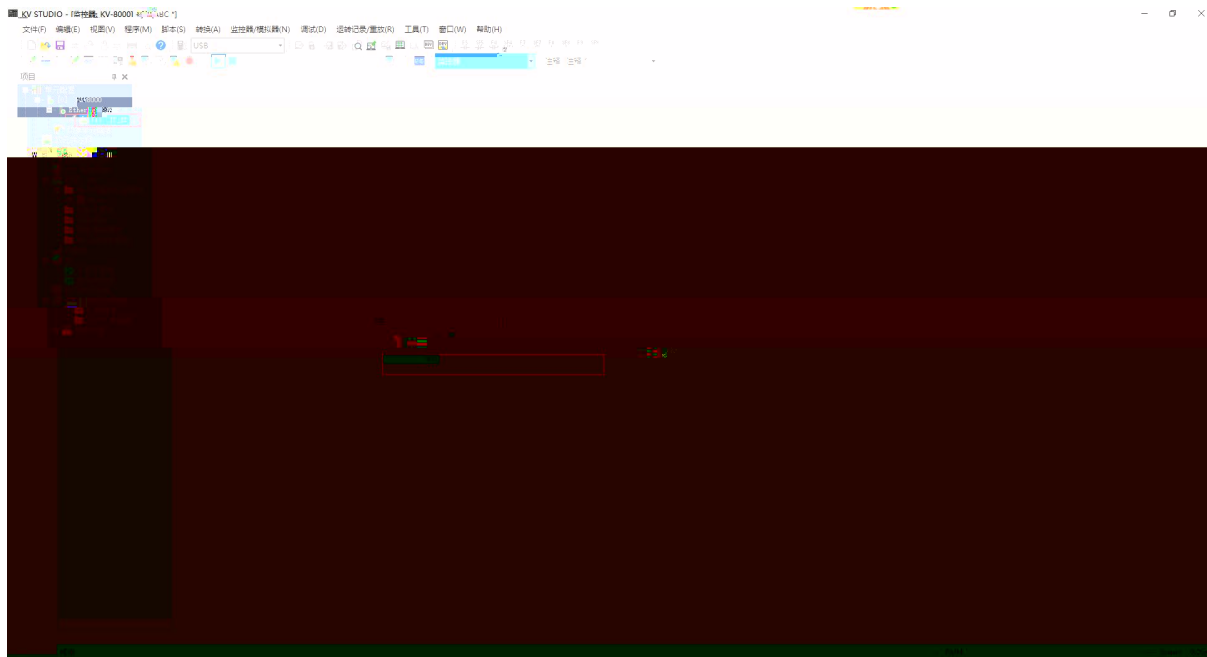
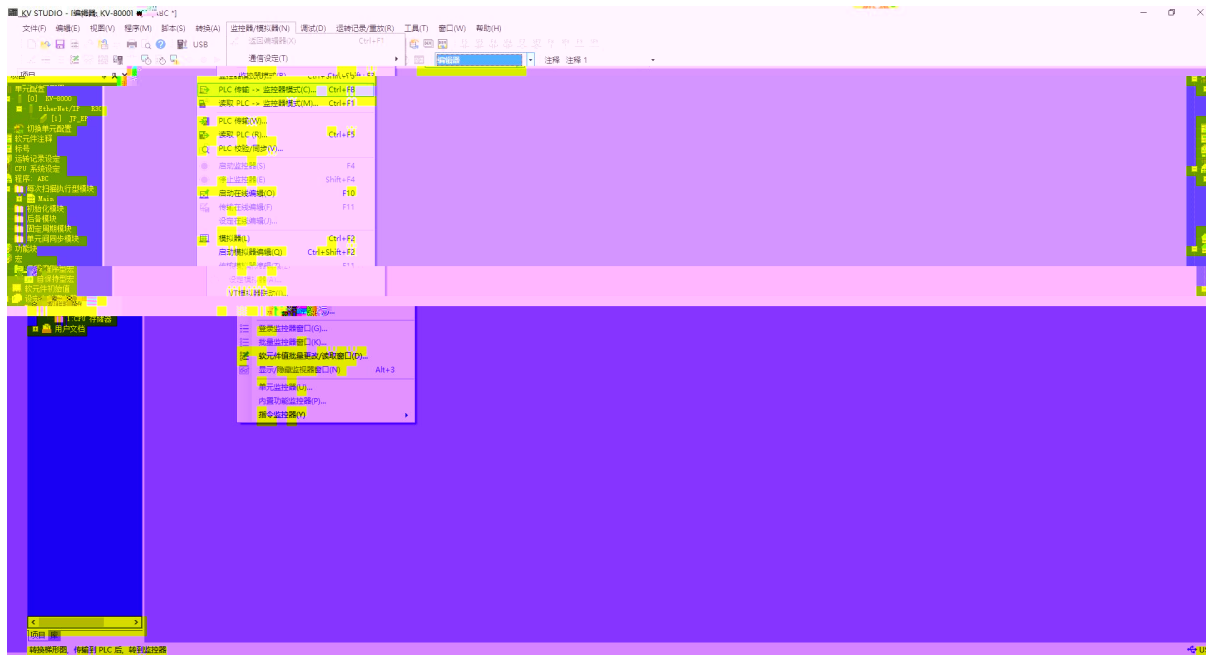














读科自读机  
**LATCOS**

读科自读机 读科自读机

---

