



LUC

KV8000

ethernetip)

Ethernet/IP LUC

KV8000



2023-3-23

2023 03 23

20223 03 23

1.

KV STUDIO Ver.10G

2.

KV8000	Ethernet/IP	IO	KV STUDIO Ver.10G
IO	.eds	IO	

3.

- KV STUDIO Ver.10G
- IO SRX_EP20221128.eds

4.

4.1

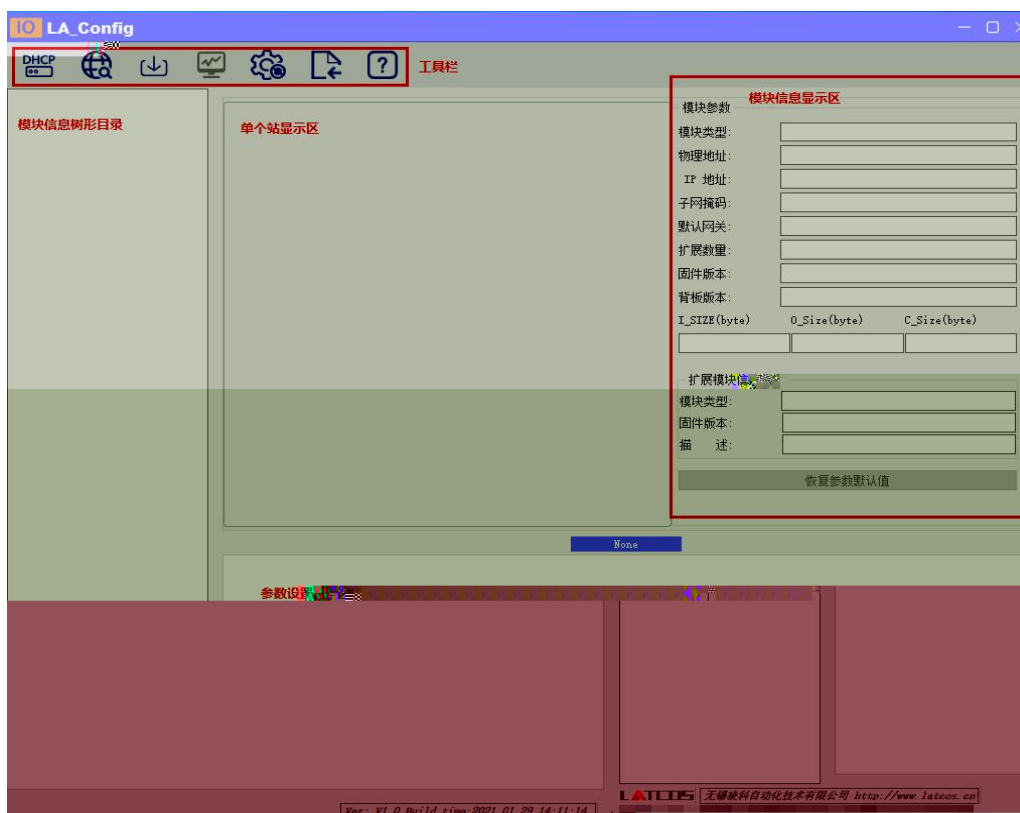
1. KV8000 IO
2. PLC Ethernet IO

4.2

IP

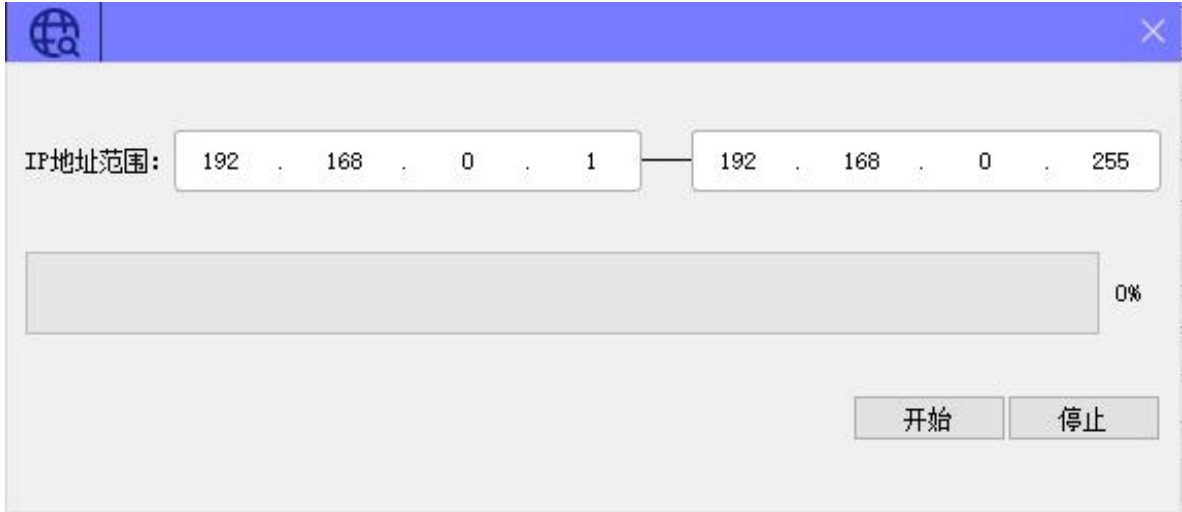
4.2.1

LAEConfig IP IP 192.168.0.x





4.2.2

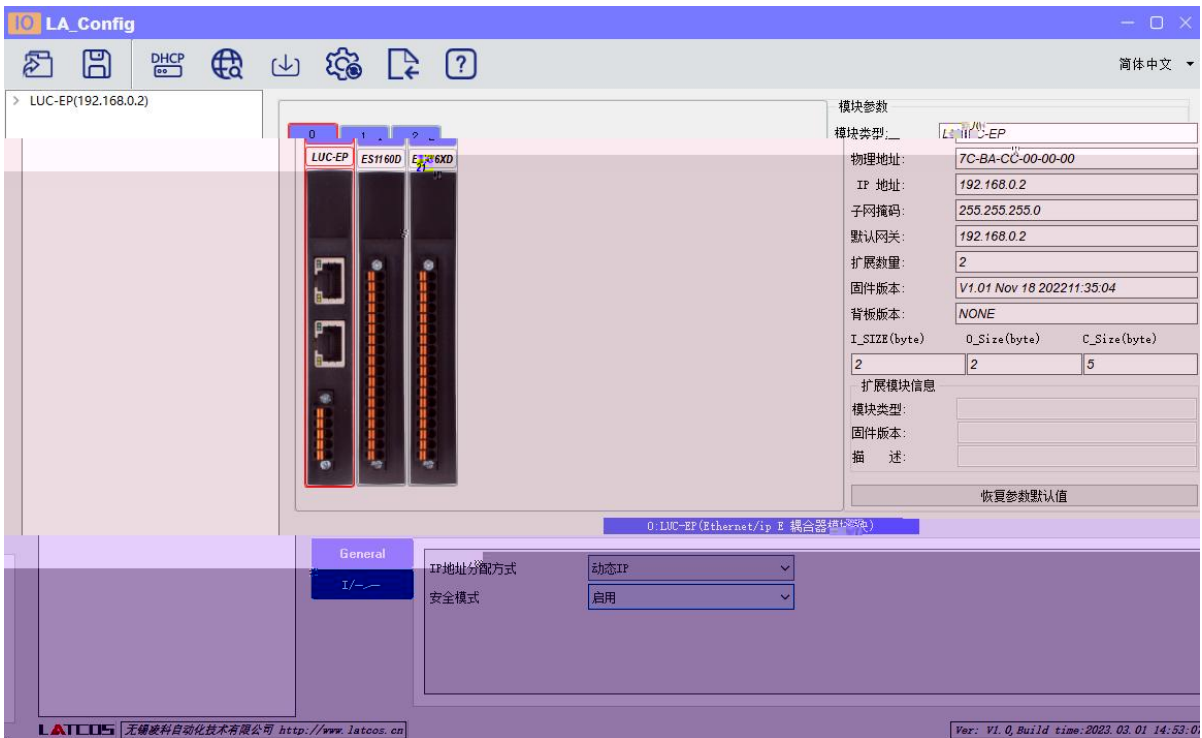


IP

IP

" "

IP



4.2.3


IP

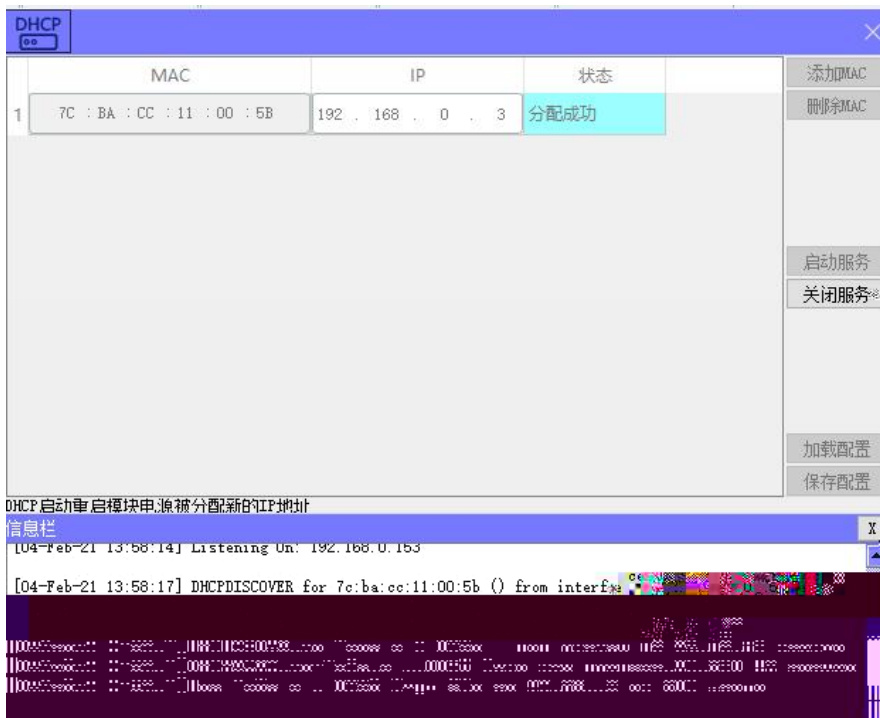
1

"IP"

IP"



 DHCPService " MAC" " MAC"
 MAC IP " "
 IP



" "

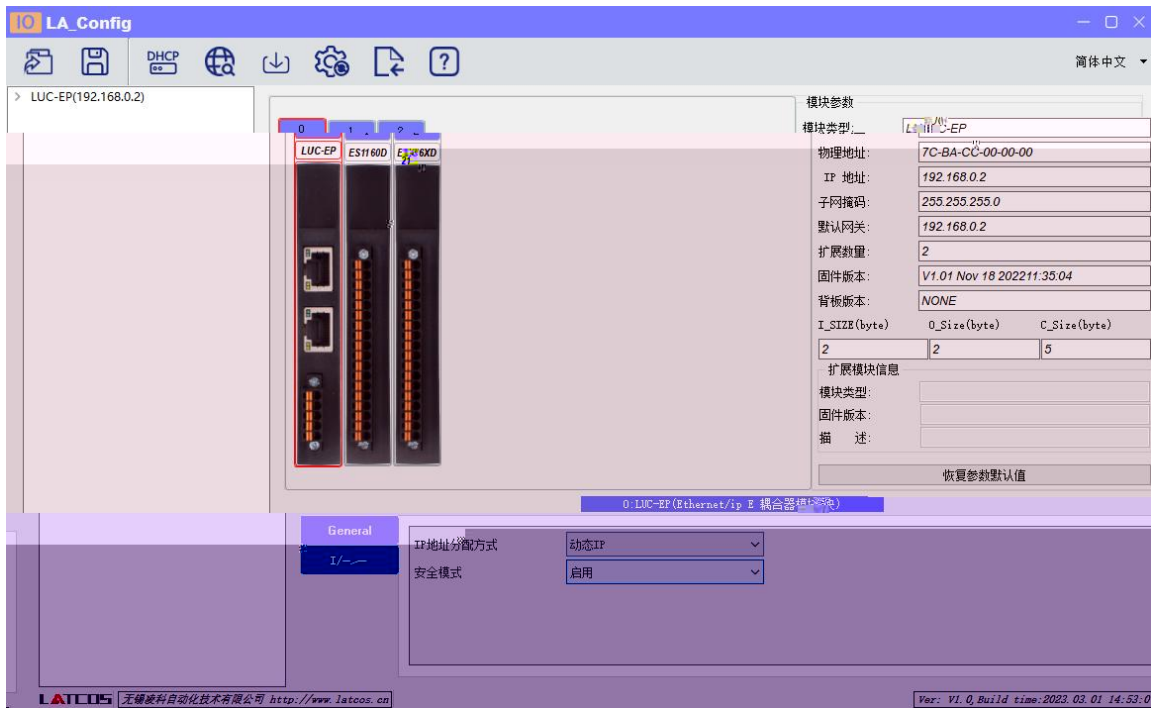


The screenshot shows a window with a blue header bar containing a gear icon and a close button. Below the header is a table with six columns: 'mac', 'IP地址', '子网掩码', '默认网关', '模块名称', and '状态'. The table is currently empty. At the bottom of the window, there is a control bar with a '扫描时间' (Scan Time) field set to '5 :S', and five buttons: '全局扫描' (Global Scan), '修改IP' (Modify IP), '恢复出厂设置' (Restore Factory Settings), and '重启模块' (Restart Module).

This screenshot shows the same window as above, but now with data in the table. The first row contains the following values: '192.168.0.3', '255.255.255.0', '192.168.0.1', and '192.168.0.1'. The 'mac' and '模块名称' columns are empty. Below the table, a green progress bar is shown, labeled '扫描进行中' (Scanning in progress) on the left and '100%' on the right. The control bar at the bottom remains the same as in the previous screenshot.

IP " IP" IP

4.2.4




4.2.5

/

1

2) DO_ 0.7 DQ0.x bit
 DQ0.x Bit0 DQ-0.0 "Error Mode"
 bit "1" "Error Value[7..0]" bit DQ0.x

3) DO_ 0.7 "Error Mode[7..0]" bit
 DQ

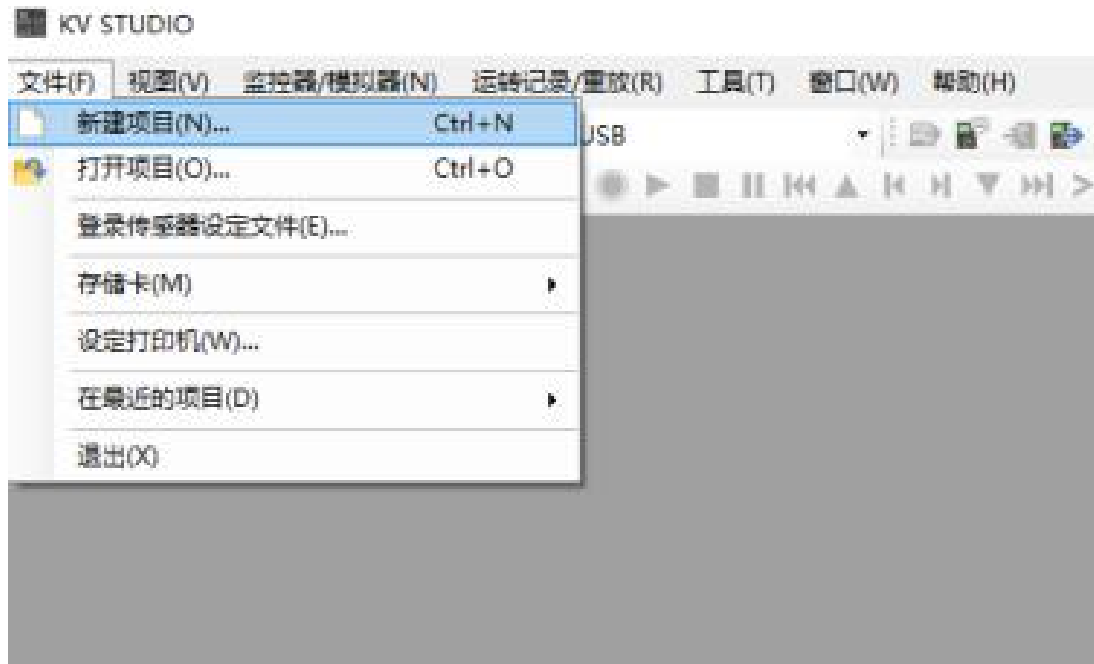
4) "  "

5.

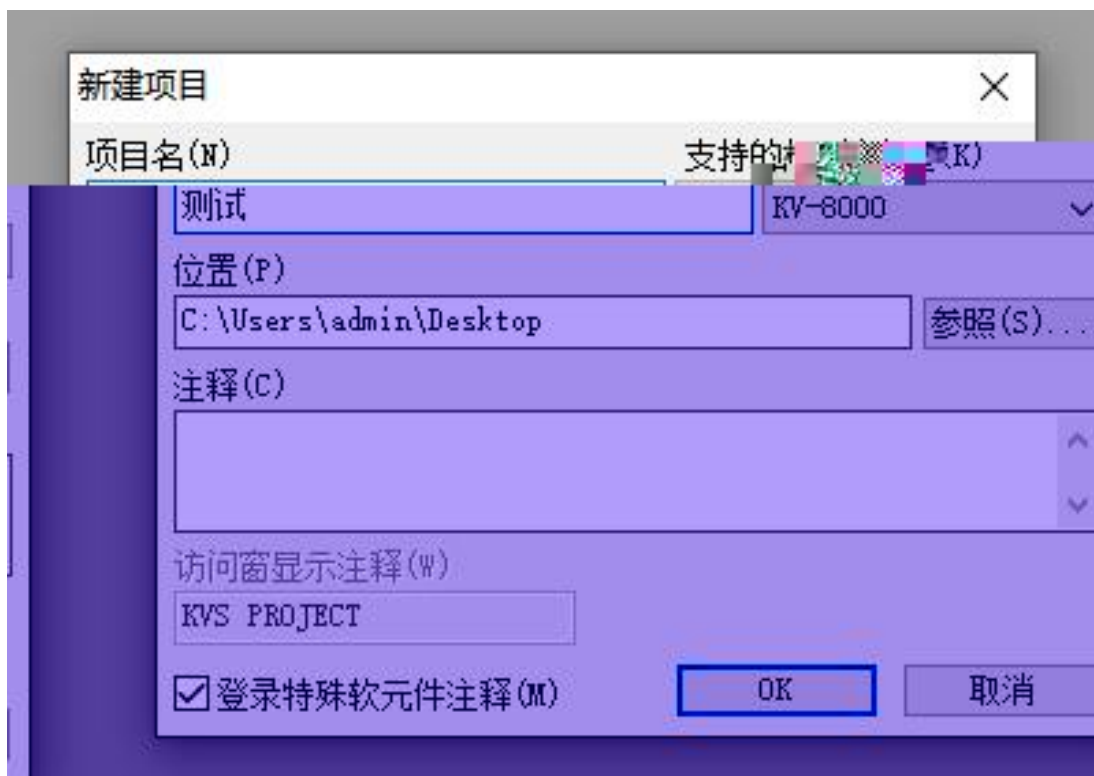
5.1

5.2

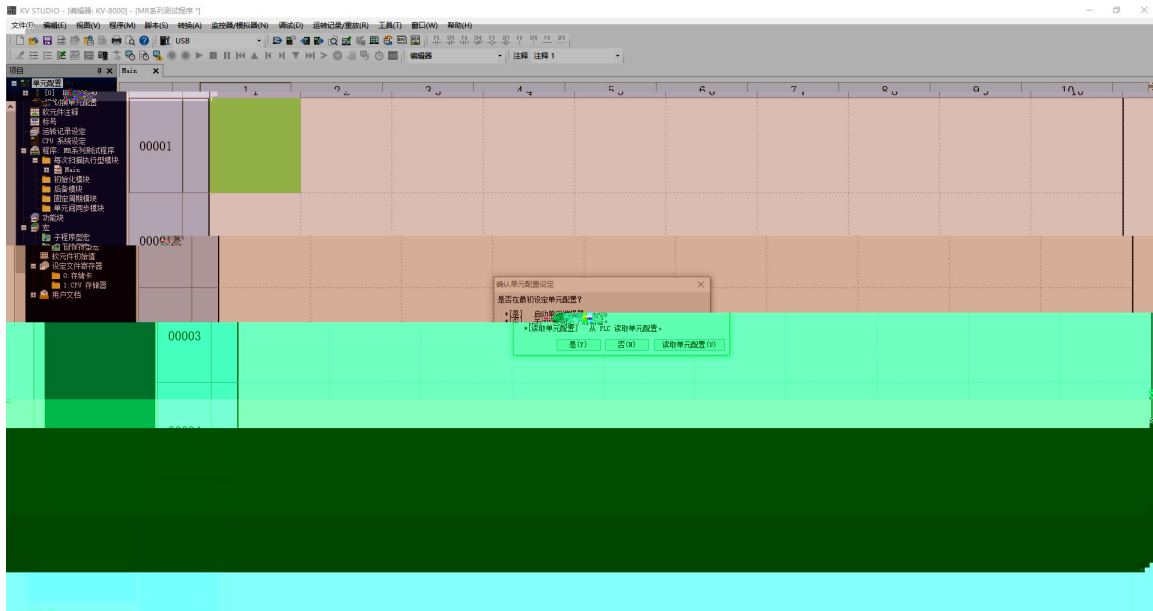
KV STUDIO



PLC

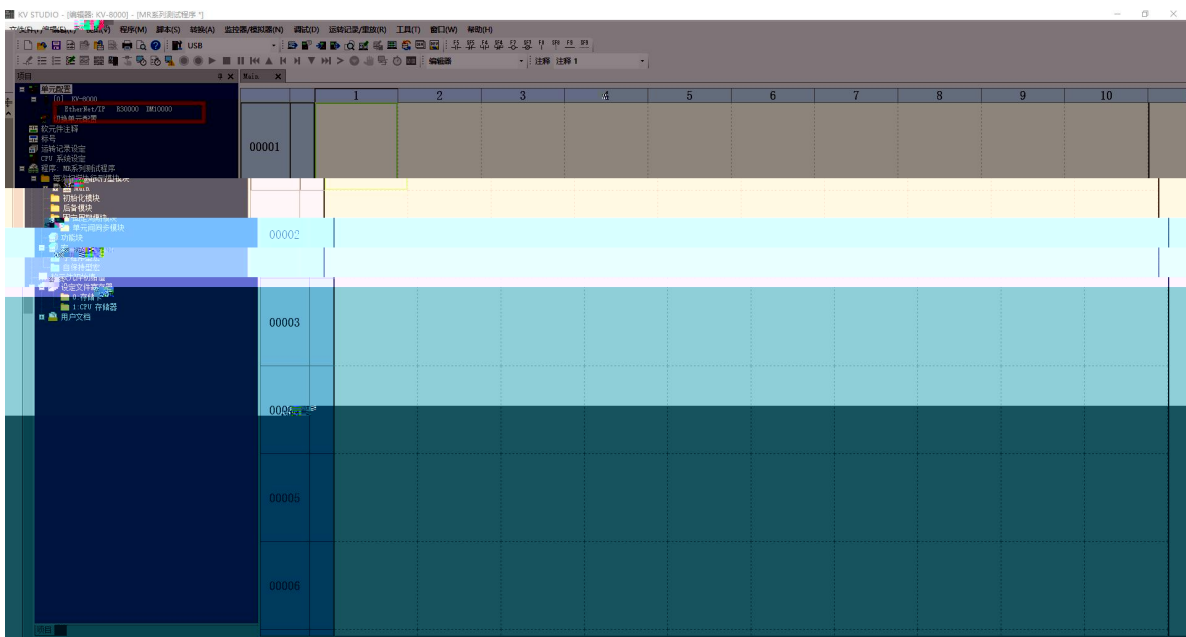


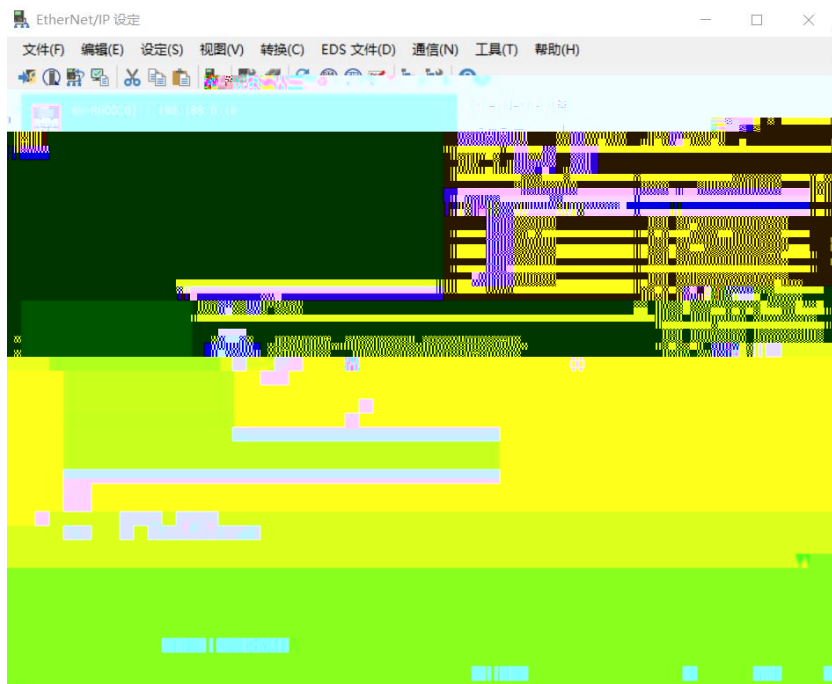
5.3 EtherNet/IP



PLC

EtherNet/IP





5.4 EDS

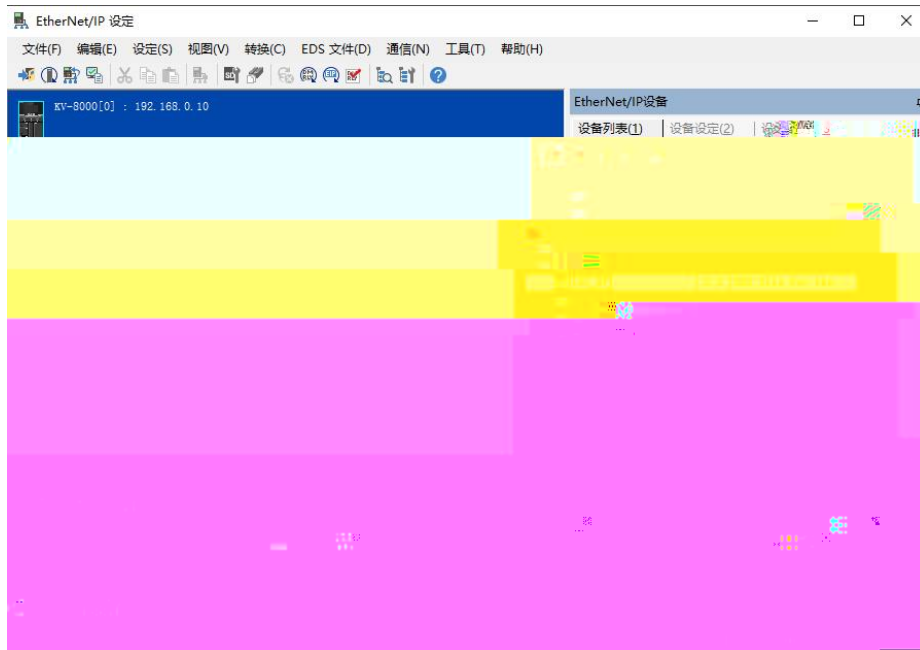
“EtherNet/IP ” “EDS ” “ ”



EDS

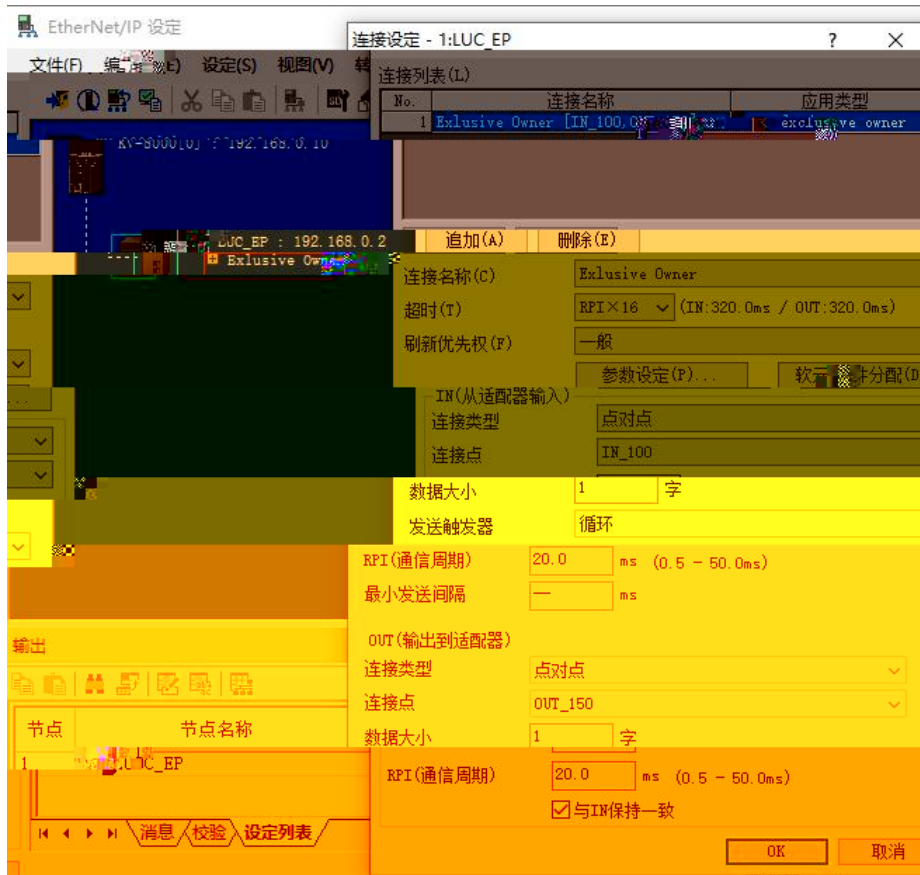
EDS

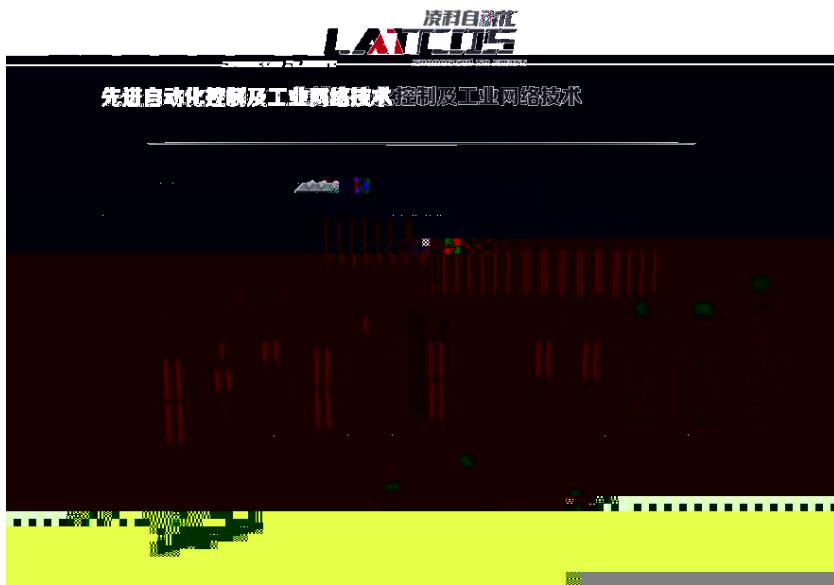




IP

“Exclusive Owner”





www.latcos.cn

3

0510-85888030

7 701