

**透科自动化**

APG1503

KV8000

ethernetip)

Ethernet/IP APG-1503 KV8000



2021-4-13

2021 04 13

2021 04 13

1.

KV STUDIO Ver.10G

2.

KV8000                      Ethernet/IP                      APG 1503                      KV STUDIO Ver.10G  
APG 1503                      .eds                      PLC modbus

3.

- KV STUDIO Ver.10G
- IO                      APG 1503.eds

4.

4.1

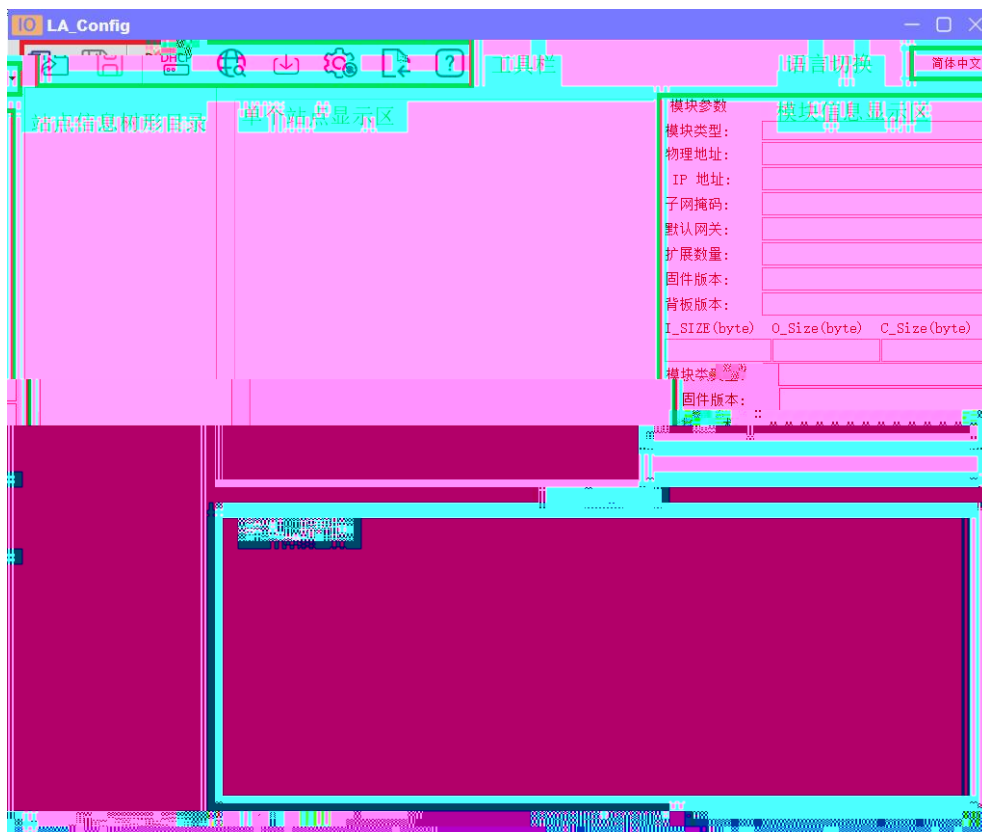
- 1. KV8000
- 2. PLC Ethernet

4.2

IP

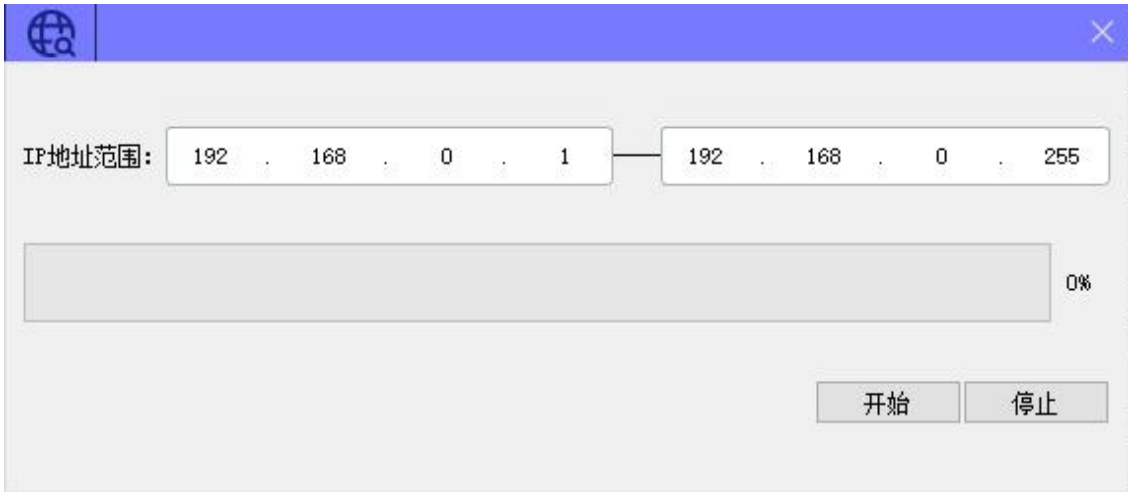
4.2.1

LAEConfig                      IP                      IP 192.168.0.x





4.2.2

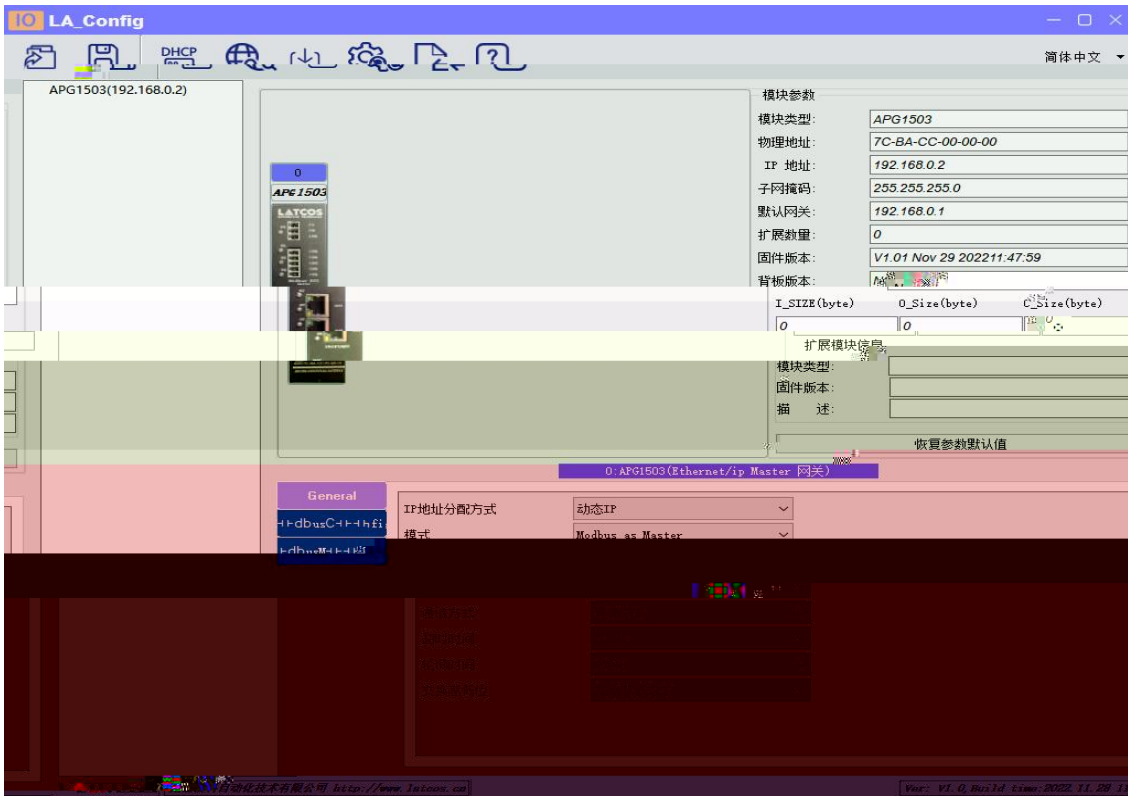


IP

IP

" "

IP



4.2.3

IP

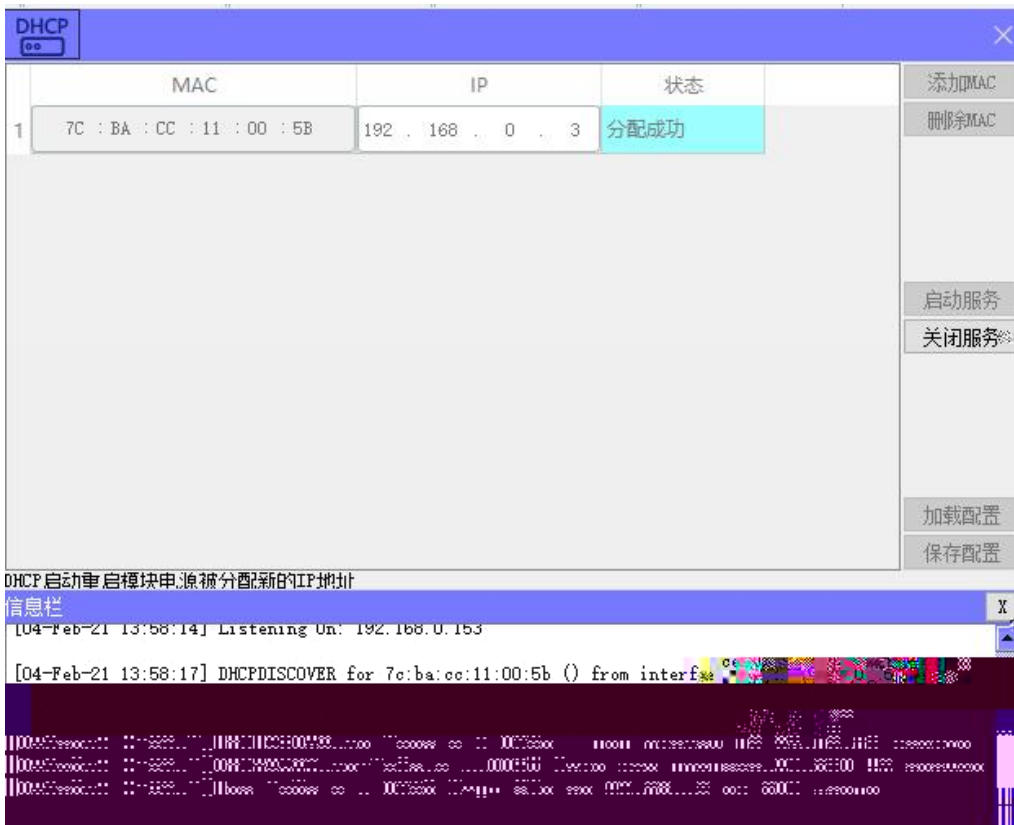
1

"IP

IP"



DHCP DHCPService " MAC" " MAC"  
 MAC IP " "  
 IP



" "



The screenshot shows a software window with a blue title bar and a close button. Below the title bar is a table with the following headers: mac, IP地址, 子网掩码, 默认网关, 模块名称, and 状态. The table body is currently empty. At the bottom of the window, there is a control bar containing a '扫描时间' field with the value '5 :S', and four buttons: '全局扫描', '修改IP', '恢复出厂设置', and '重启模块'.

This screenshot shows the same software window as above, but with a large green rectangular overlay covering the table area. A small blue rectangular box is visible at the bottom center of the green area. The control bar at the bottom remains visible.

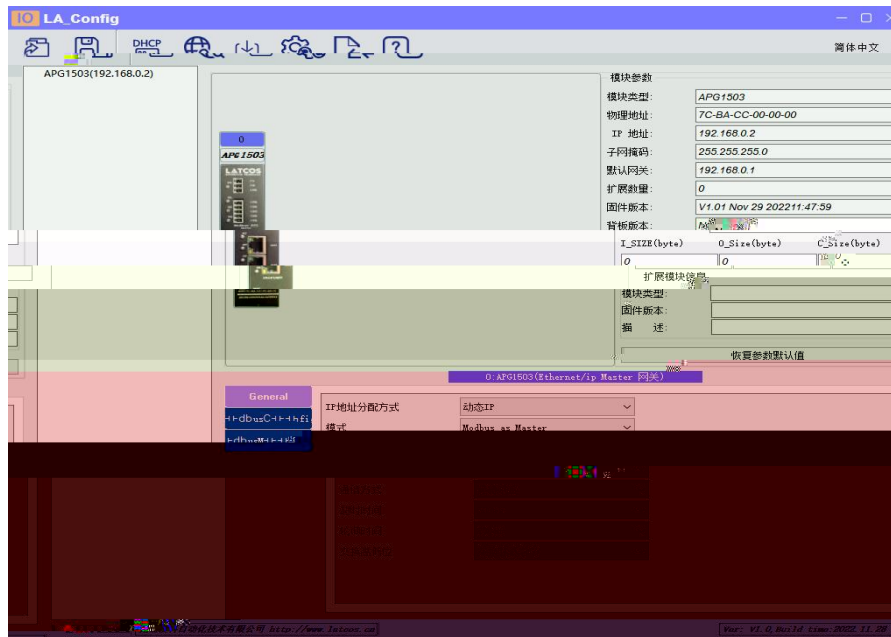
IP

“ IP”

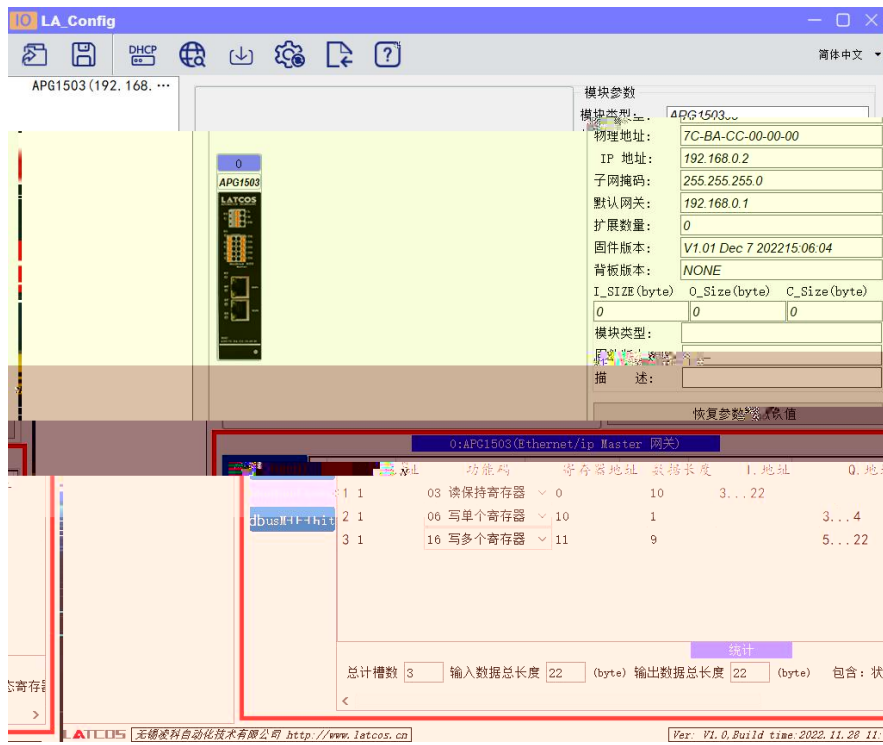
IP

## 4.2.4

### 1. MODBUS



### 2. MODBUS



3                    10 16                    10 16

2                    +20                    modbus                    22

2                    +20                    modbus                    22



5.

APG1503

PLC(KV8000)

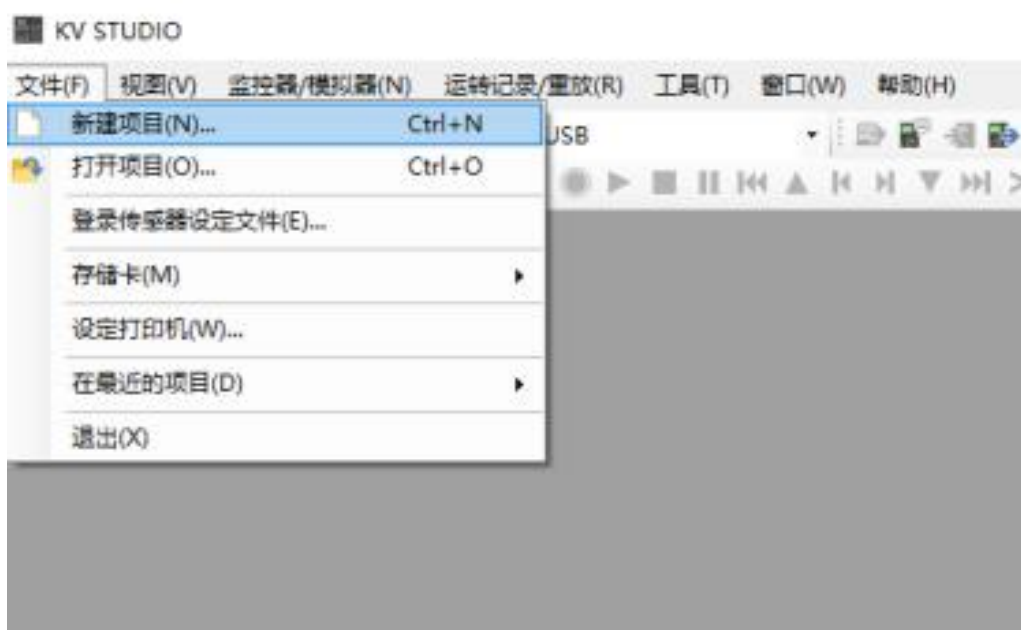
KV STUDIO

5.1

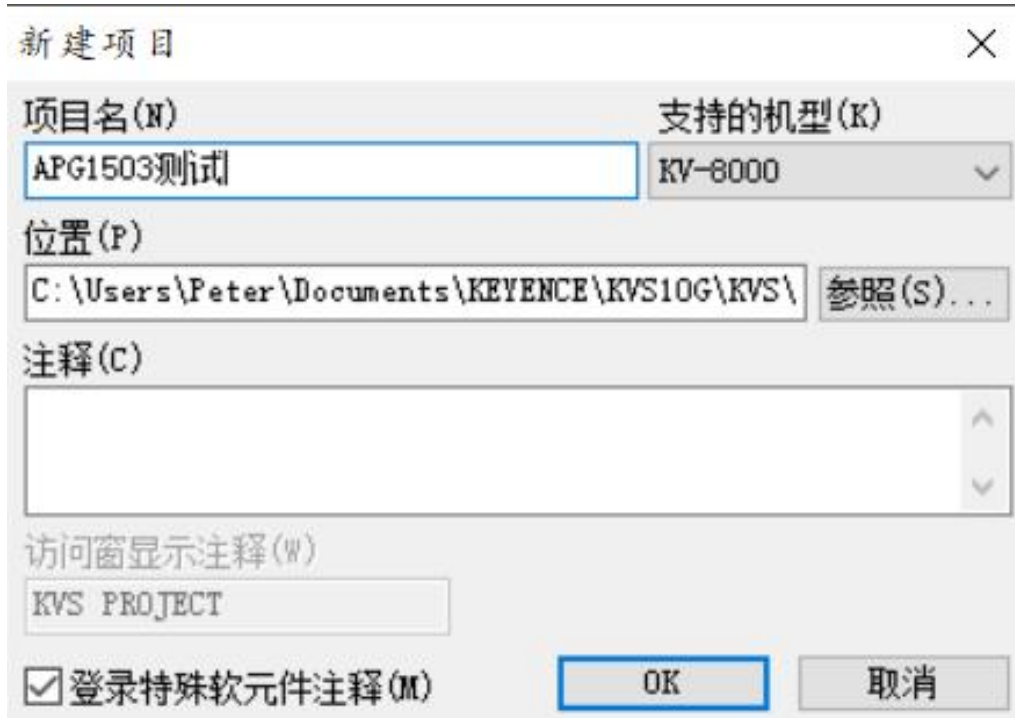
5.2

KV STUDIO

" " " "

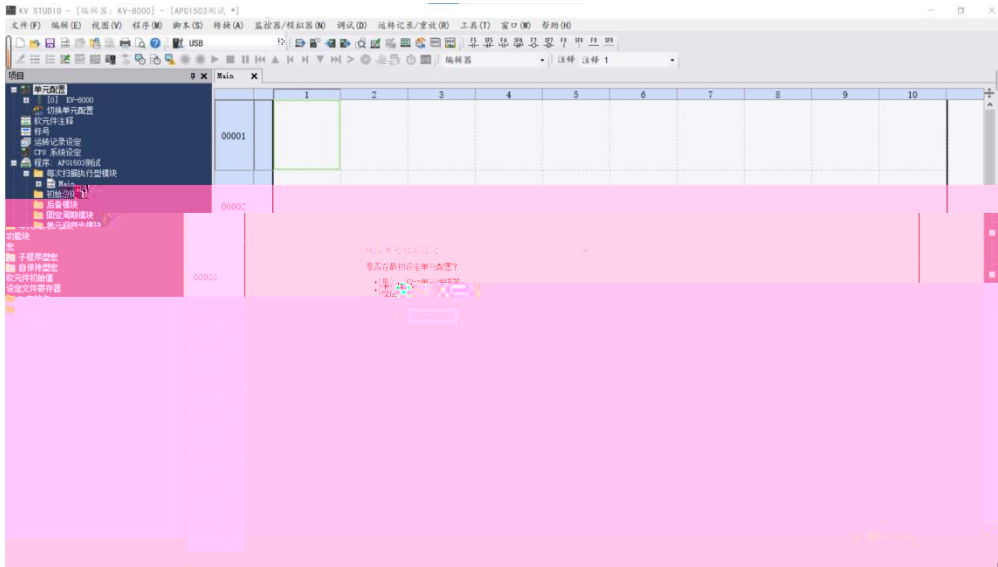


PLC



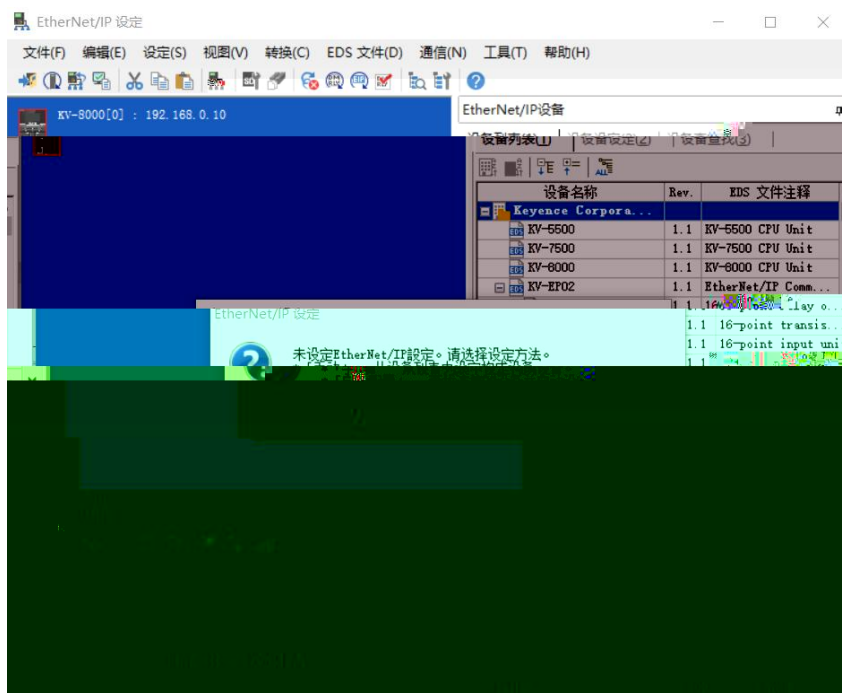
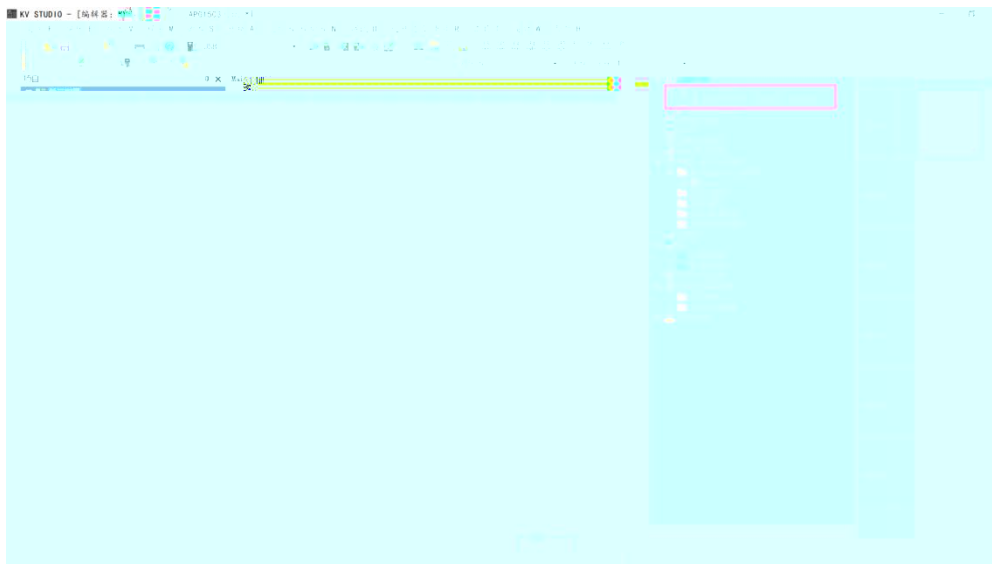


## 5.3 EtherNet/IP



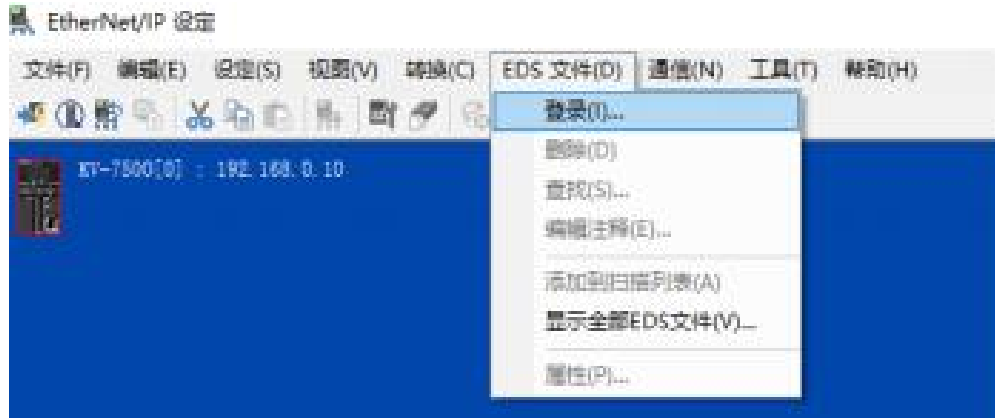
PLC

EtherNet/IP



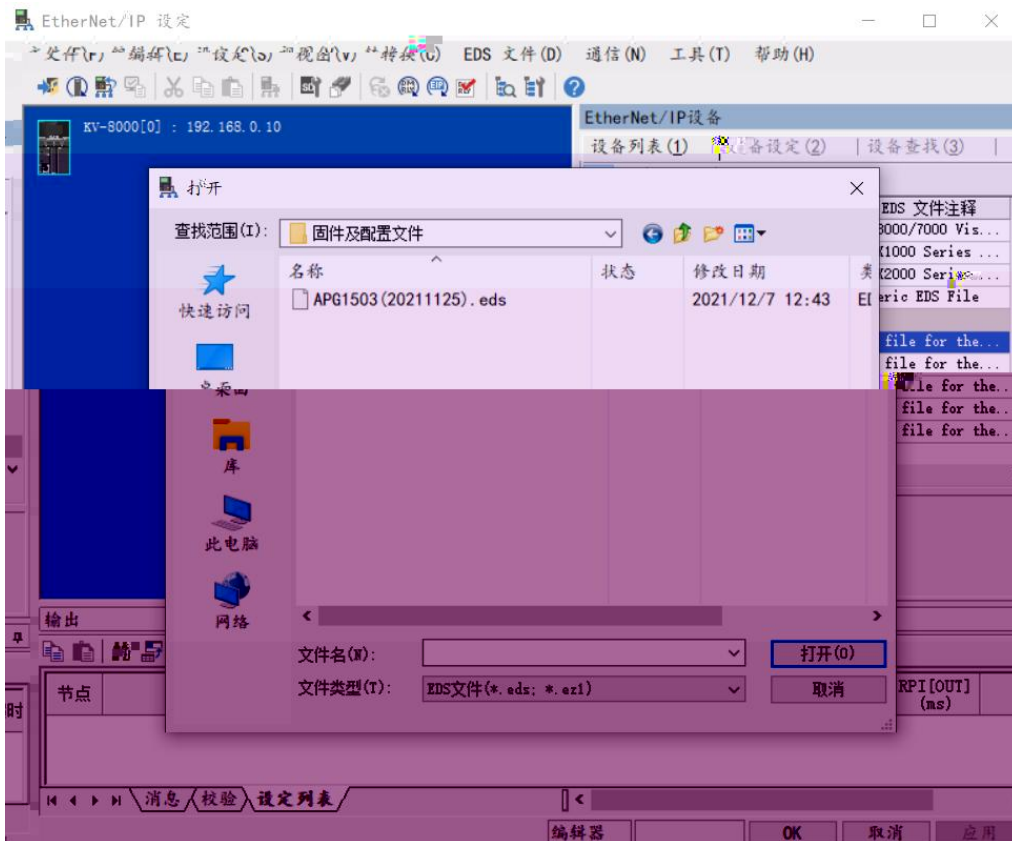
## 5.4 EDS

“EtherNet/IP ” “EDS ” “ ” “ ”



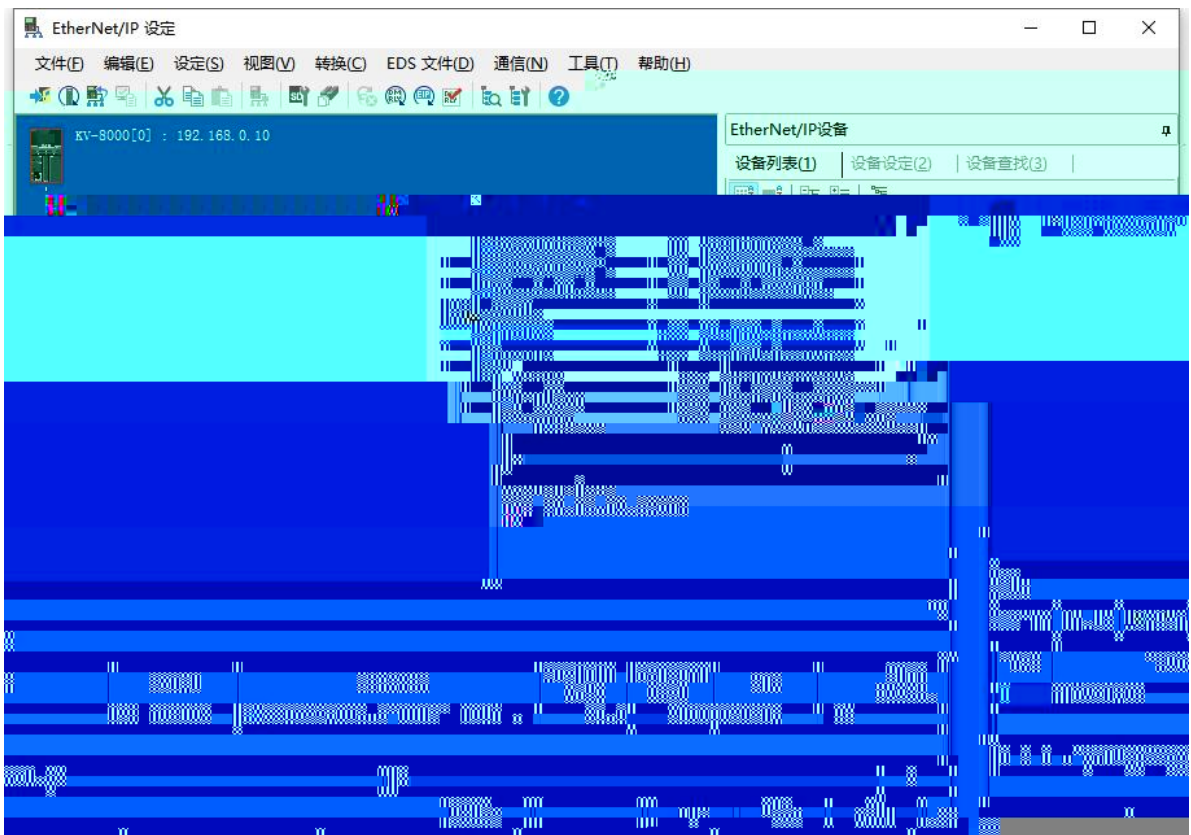
EDS

EDS

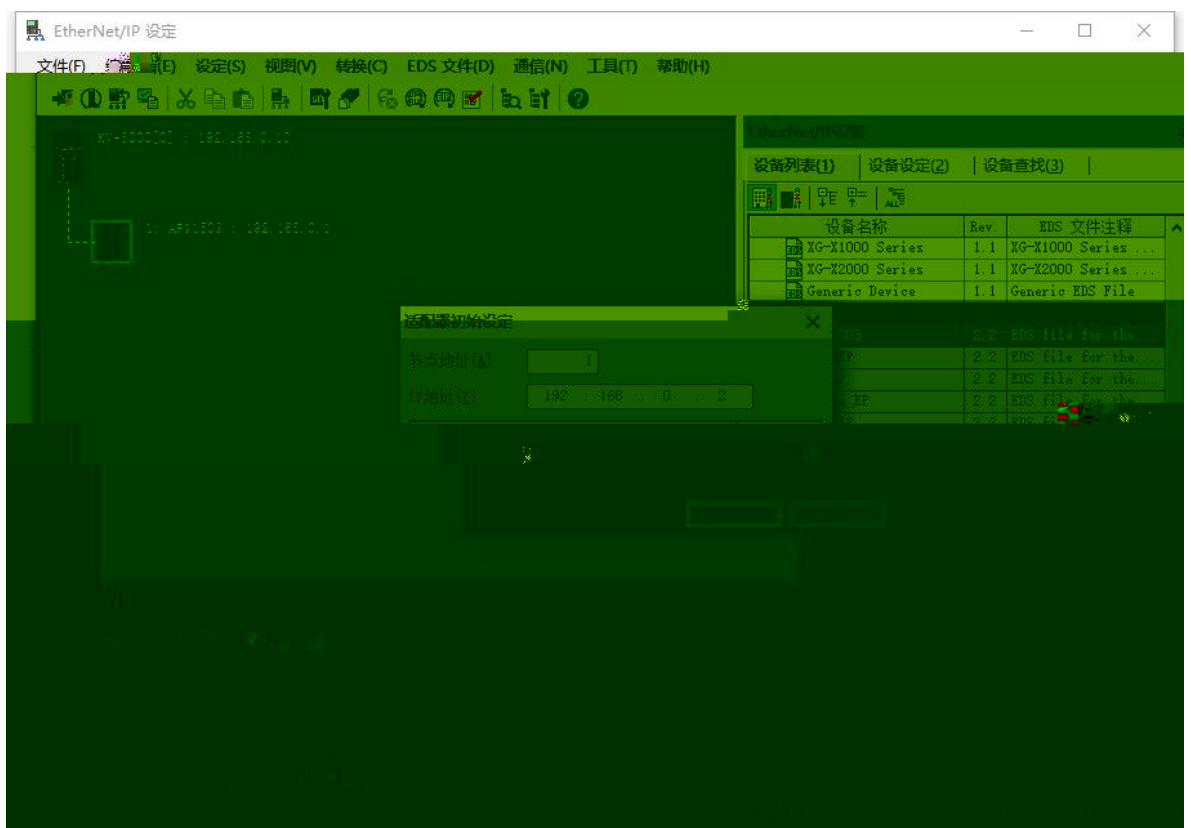


EtherNet/IP

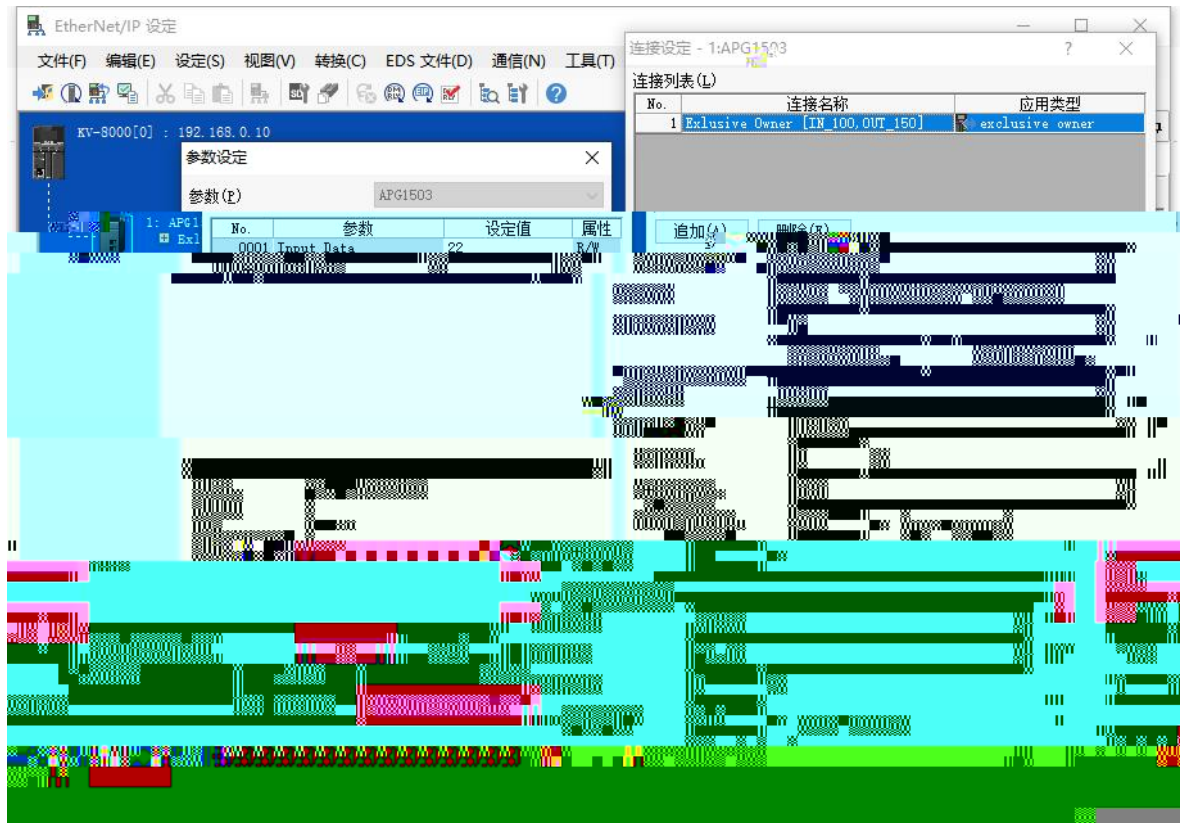
"APG 1503"



IP



"Exclusive Owner"



a, Exclusive Owner

b,

c, RPI 5-30

Input Data Output Data 1 = 8

Ge-herQ1	从机地址	功能码	寄存器地址	数据长度	I. 地址	Q. 地址
ModbusConfig	1	03 读保持寄存器	0	10	3... 22	
dbusM+H+hit	2	06 写单个寄存器	10	1		3... 4
	3	16 写多个寄存器	11	9		5... 22

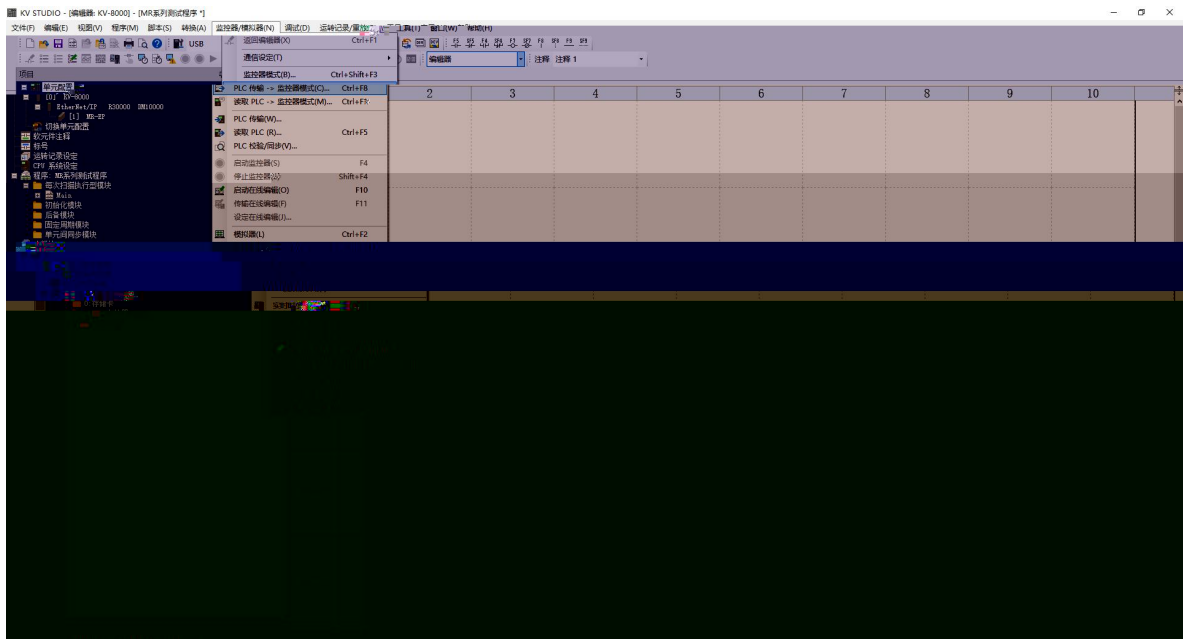
统计

总计槽数 3 输入数据总长度 22 (byte) 输出数据总长度 22 (byte) 包含: 状态寄存器

LA Econfig

PLC

plc



---

5.6

PLC

" " " "

6.

1.

windows

ping

IP

ping

ping

IP

IP

2

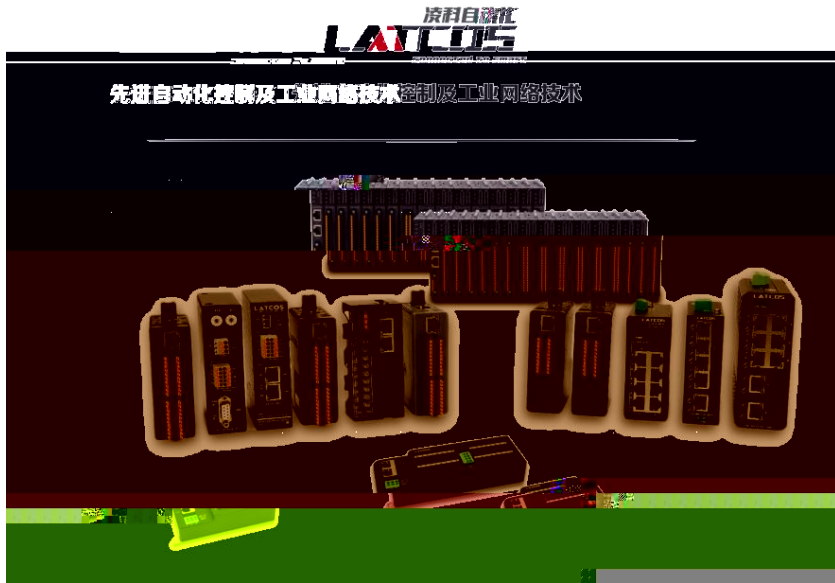
RUN

ERR

IP

IP

IP



[www.laticos.cn](http://www.laticos.cn)

3

0510-85888030

7 701